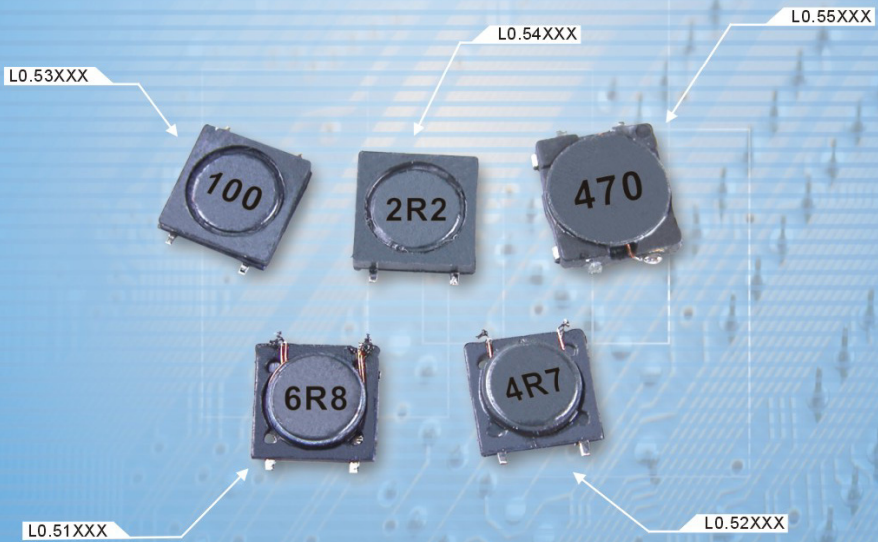


SMD POWER INDUCTOR

L0.51XXX~L0.55XXX Series



Features

- 4 electrode terminals for chopper circuit
- Suitable for flow and reflow soldering

Application

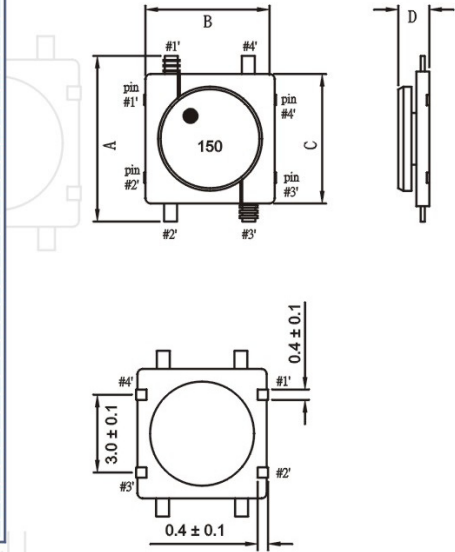
- Ideal use in height-conscious application
- LCD driver power supply, PDA, Digital still camera, DC/DC converter & choke coil



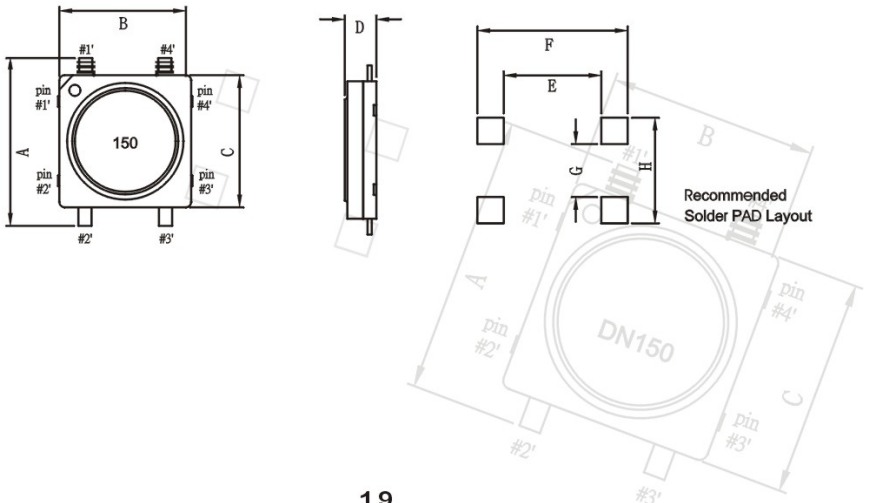
L0.51XXX / L0.52XXX / L0.53XXX

MODEL NO.	INDUCTANCE L ($\mu\text{H}\pm 20\%$)	RATED CURRENT (Amps)	DCR R(Ω) Max
L0.512R2.A20	2.2	1.25	0.21
L0.513R3.A20	3.3	1.05	0.24
L0.514R7.A20	4.7	0.92	0.29
L0.516R8.A20	6.8	0.74	0.44
L0.51100.A20	10	0.62	0.62
L0.51150.A20	15	0.47	0.91
L0.51220.A20	22	0.39	1.27
L0.51330.A20	33	0.32	1.79
L0.51470.A20	47	0.27	2.74
L0.522R2.A20	2.2	1.41	0.21
L0.523R3.A20	3.3	1.15	0.24
L0.524R7.A20	4.7	0.90	0.30
L0.526R8.A20	6.8	0.82	0.43
L0.52100.A20	10	0.64	0.52
L0.52150.A20	15	0.60	0.68
L0.52220.A20	22	0.46	1.18
L0.52330.A20	33	0.39	1.53
L0.52470.A20	47	0.30	2.27
L0.532R2.A20	2.2	1.40	0.15
L0.533R3.A20	3.3	1.13	0.20
L0.534R7.A20	4.7	0.89	0.27
L0.536R8.A20	6.8	0.72	0.38
L0.53100.A20	10	0.58	0.63
L0.53150.A20	15	0.48	0.82
L0.53220.A20	22	0.42	1.05
L0.53330.A20	33	0.32	1.50
L0.53470.A20	47	0.25	2.47

STYLE 1

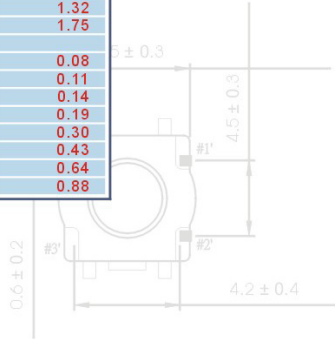


STYLE 2

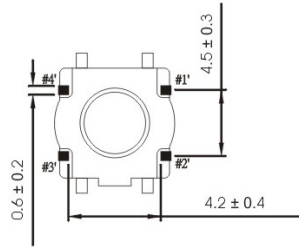
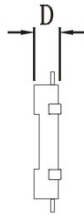
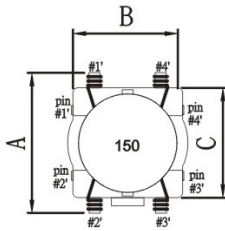


L0.54XXX / L0.55XXX

MODEL NO.	INDUCTANCE	RATED	DCR
	L ($\mu\text{H}\pm 20\%$)	CURRENT (Amps)	R(Ω) Max
L0.542R2.A20	2.2	1.62	0.16
L0.543R3.A20	3.3	1.48	0.19
L0.544R7.A20	4.7	1.15	0.22
L0.546R8.A20	6.8	0.93	0.27
L0.54100.A20	10	0.74	0.38
L0.54150.A20	15	0.62	0.62
L0.54220.A20	22	0.50	0.91
L0.54330.A20	33	0.38	1.32
L0.54470.A20	47	0.33	1.75
L0.553R3.A20	3.3	1.25	0.08
L0.554R7.A20	4.7	1.20	0.11
L0.556R8.A20	6.8	0.90	0.14
L0.55100.A20	10	0.85	0.19
L0.55150.A20	15	0.57	0.30
L0.55220.A20	22	0.54	0.43
L0.55330.A20	33	0.38	0.64
L0.55470.A20	47	0.35	0.88



STYLE 3



Unit: Inch/mm

PART NO.	Style	A	B	C	D	E	F	G	H
L0.51XXX.A20	1	.252 max	.197 ± .012	.197 ± .004	.039 ± .004	.146	.224	.079	.167
		6.4 max	5.0 ± 0.3	5.0 ± 0.1	1.0 ± 0.1	3.7	5.7	2.0	4.0
L0.52XXX.A20	1	.252 max	.197 ± .012	.197 ± .004	.047 ± .004	.146	.224	.079	.167
		6.4 max	5.0 ± 0.3	5.0 ± 0.1	1.2 ± 0.1	3.7	5.7	2.0	4.0
L0.53XXX.A20	2	.252 max	.197 ± .012	.197 ± .004	.039 ± .004	.146	.224	.079	.167
		6.4 max	5.0 ± 0.3	5.0 ± 0.1	1.0 ± 0.1	3.7	5.7	2.0	4.0
L0.54XXX.A20	2	.252 max	.197 ± .012	.197 ± .004	.047 ± .004	.146	.224	.079	.167
		6.4 max	5.0 ± 0.3	5.0 ± 0.1	1.2 ± 0.1	3.7	5.7	2.0	4.0
L0.55XXX.A20	3	.291 max	.216 ± .012	.236 ± .008	.059MAX	.134	.224	.142	.252
		7.4 max	5.5 ± 0.3	6.0 ± 0.2	1.5MAX	3.4	5.7	3.6	6.4